

**61 Fairbanks Court  
Atlip Road,  
Alperton  
HA0 4GJ**



**Ground Floor Commercial Suite  
To Let  
About to Undergo Refurbishment**

3,500 Sq. Ft (325.16 Sq. m) approx.

**020 8332 7788**

Suite A, 1 Hill Rise, Richmond upon Thames TW10 6UQ

**[www.michaelrogers.co.uk](http://www.michaelrogers.co.uk)**

## Location

61 Fairbanks Court is located on Atlip Road just off Ealing Road in the centre of Alperton within close proximity to the Hanger Lane gyratory system. This provides direct access to Central London via the A40 and connections to the other major communication links including M40, M25, M4 and M1 via the North Circular A406. Rail services are available within walking distance from Alperton Underground Station (Piccadilly Line) which provides easy access to Central London. Numerous bus services serve the area.

The centre of Alperton is within a few minutes' walk providing numerous retail and restaurant facilities.

The property has excellent views across The Grand Union Canal

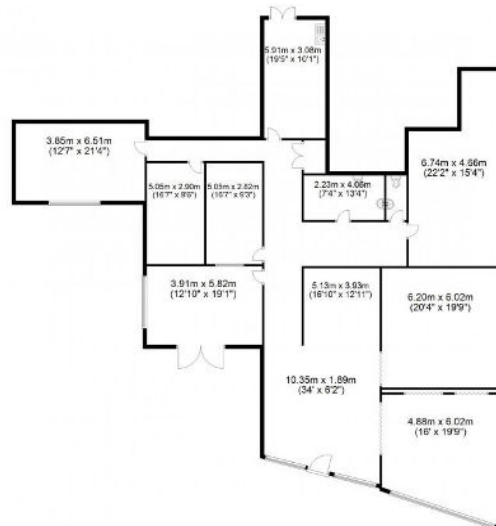
## Description

The property which is about to undergo refurbishment, consists of part commercial on ground floor and residential on all the upper floors.

The unit is currently being used as a clinic and has been fitted out to a very high standard. There are seven treatment areas as well as a staffroom and reception. The unit has its own private terrace area overlooking the canal.

The accommodation provides the following approximate net internal floor areas:

Floor	SQFT	SQM
Ground	3,500	325.16



## Amenities

- Outdoor terrace
- Canal views
- Timber floors
- Comfort cooling and heating
- 4 car spaces
- Kitchen
- Spot lighting
- Bi-fold partitions
- Male and female WCs
- DDA compliant WCs

## Terms

By way of a new lease on terms to be agreed.

## Rent

£87,500 per annum exclusive.



## Planning

There is a mixture of planning uses available including A1, A2, A3, B1, D1 and D2. This will shortly come under Use class E.

## Business Rates

We are advised that the suite has a rateable value of £61,000 which would give rates payable from 1 April 2023 of £31,232. Applicants are advised to make their own enquiries with the Valuation Office Agency.

## Service Charge

The service charge is currently £7,000 per annum. This figure is to be reassessed.

## EPC

Upon application.

## Legal Costs

Each party to cover their own legal costs.

## Anti Money Laundering

Michael Rogers LLP is regulated by the RICS and by HMRC in relation to its agency services and as a result is obliged to undertake anti money laundering checks on all parties proceeding with property transactions. We cannot proceed with any relevant property transactions without these checks having been satisfactorily completed and you will be asked to provide information to satisfy such checks.

## Viewings

For further information please contact:

Niall Christian

Tel: 0208 332 7788 [niall.christian@michaelrogers.co.uk](mailto:niall.christian@michaelrogers.co.uk)

Subject to Contract January 2023

The accuracy of any description, references to condition, necessary permissions for use and occupation and other details contained herein is not guaranteed and is for general guidance only and prospective purchasers or tenants must not rely on them as statements of fact or representations and must satisfy themselves as to their accuracy. Neither Michael Rogers LLP, nor any of its employees or representatives has any authority to make or give any representation or warranty or enter into any contract whatsoever in relation to the property. Rents quoted in these particulars may be subject to VAT in addition. The reference to any mechanical or electrical equipment or other facilities at the property shall not constitute a representation (unless otherwise stated) as to its state or condition or that it is capable of fulfilling its intended function. Prospective tenants/purchasers should satisfy themselves as to the fitness of such equipment for their requirements.

Michael Rogers LLP is a Limited Liability Partnership registered in England (Number OC344608). Registered Office: Chapter House, 33 London